

6000 Series Rotary Joints

▼ FTKR6605-10A, FTKR6605-15A

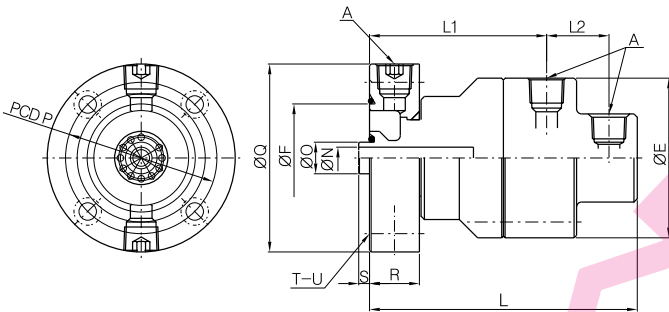


Operating Condition

- Max. Air Pressure : 10kg/cm² (150PSI)
- Max. Hydraulic Pressure : 70kg/cm² (1000PSI)
- Max. Rotation Speed : 300RPM
- Max. Temperature : 100°C (210°F)
- Media : Air, Hydraulic Oil
- * Avoid max. pressure at max. rpm operation

Features

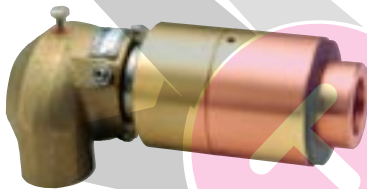
- For Dual action Hydraulic Oil Cylinder
- Duoflow
- Low Friction at High speed rotation by Mechanical seal structure



[unit : mm]

MODEL NO.	A (PT)	E	F	L	L1	L2	N	O	P	Q	R	S	T	U (ø)
FTKR6605-10A	3/8"	80	54	126	85	28	10	19	91	113	23	10	4	10.5
FTKR6605-15A	1/2"	96	65	161	106.5	37.5	13	19	91	113	30	6.5	4	10.5

7200 Series Rotary Joints



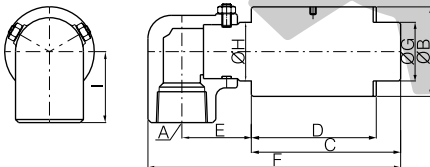
Operating Condition

- Max. Water Pressure : 15kg/cm² (210PSI)
- Max. Rotation Speed : 100RPM
- Max. Temperature : 100°C (210°F)
- Media : Water
- * Avoid max. pressure at max. rpm operation

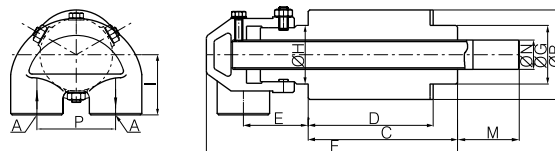
Features

- Designed to be mounted inside of the cylinders on the continuous casting line.
- Body Insert Type & Full Insert Type available

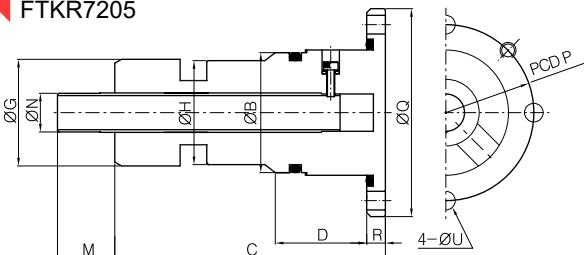
▼ FTKR7211



▼ FTKR7201



▼ FTKR7205



[unit : mm]

MODEL NO.	A (PT)	B	C	D	E	F	G	H	I	M	N	P	Q	R	U
FTKR7211-20A	3/4"RH	46	67	57	54.5	140.5	27	28	34	-	-	-	-	-	-
FTKR7201-20A	3/4"RH	58	96.8	81	42	162.8	38	38	39	40	19	51	-	-	-
FTKR7211-25A	1"RH	58	96.8	81	45	162.8	38	38	46	-	28	-	-	-	-
FTKR7201-25A	1"RH	70	100	85	66	197	49	50	46	38	14.5	64	-	-	-
FTKR7205-15A	Flange	45	101.5	33	-	-	40	39	-	21.5	-	66	78	7	7

