

# 6000 Series Rotary Joints

▼ FTBR6011-10A, FTBR6011-15A, FTBR6011-20A

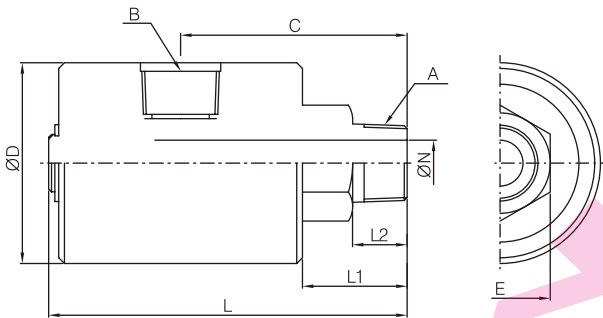


■ Operating Condition

- Max. Air Pressure : 10kg/cm<sup>2</sup> (150PSI)
- Max. Hydraulic Pressure : 210kg/cm<sup>2</sup> (3000PSI)
- Max. Rotation Speed : 250RPM
- Max. Temperature : 100°C (210°F)
- Media : Air, Hydraulic Oil
- \* Avoid max. pressure at max. rpm operation

■ Features

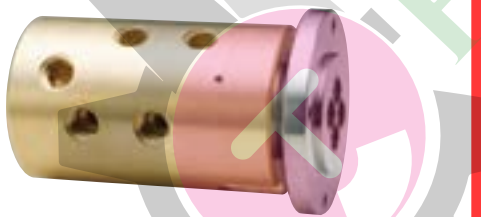
- For Low Speed rotation with Air/Oil Pressure



[unit : mm]

MODEL NO.	A (PT)	B (PT)	C	D	E	L	L1	L2	N
FTBR6011-10A	3/8"	3/8"	51.5	40	22	80.5	25.5	14	8
FTBR6011-15A	1/2"	1/2"	73	60	32	115.5	32	18	13
FTBR6011-20A	3/4"	3/4"	79	70	35	125	36.5	19	16

▼ FTBR6205-15A

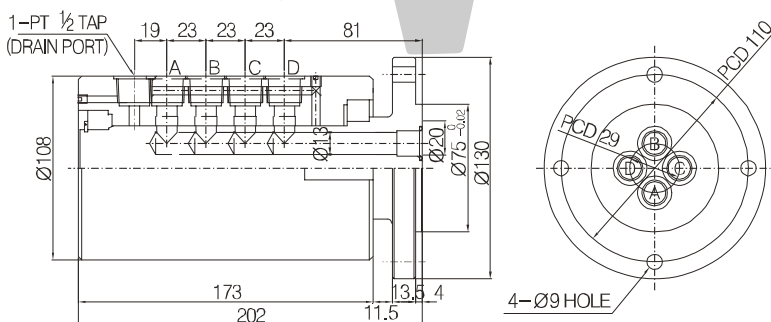


■ Operating Condition

- Max. Air Pressure : 10kg/cm<sup>2</sup> (150PSI)
- Max. Hydraulic Pressure : 140kg/cm<sup>2</sup> (2000PSI)
- Max. Rotation Speed : 250RPM
- Max. Temperature : 100°C (210°F)
- Media : Air, Hydraulic Oil
- \* Avoid max. pressure at max. rpm operation

■ Features

- Multi-level Index table mounted Air/Oil hydraulic machine
- Special Seal for long and stable service life
- Multi-port unions are available on order demand



# 6000 Series Rotary Joints

▼ FTKR6101-25A, FTKR6106-25A

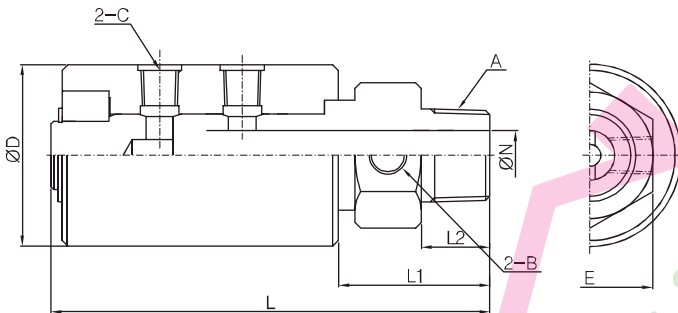


■ Operating Condition

- Max. Air Pressure : 10kg/cm<sup>2</sup> (150PSI)
- Max. Hydraulic Pressure : 210kg/cm<sup>2</sup> (3000PSI)
- Max. Rotation Speed : 250RPM
- Max. Temperature : 100°C (210°F)
- Media : Air, Hydraulic Oil
- \* Avoid max. pressure at max. rpm operation

■ Features

- For Low Speed rotation with Air/Oil Pressure
- For Slit line, Press Automation Line of Steel Industry



[unit : mm]

Nominal Size	A	B (PT)	C (PT)	D	E	L	L1	L2	N
FTKR6101-25A	PT1"	1/4"	1/4"	66	46	159.5	55	25	8
FTKR6106-25A	NPT1"	1/4"	1/4"	66	46	159.5	55	25	8

▼ FTKR6701-32A, FTKR6706-32A

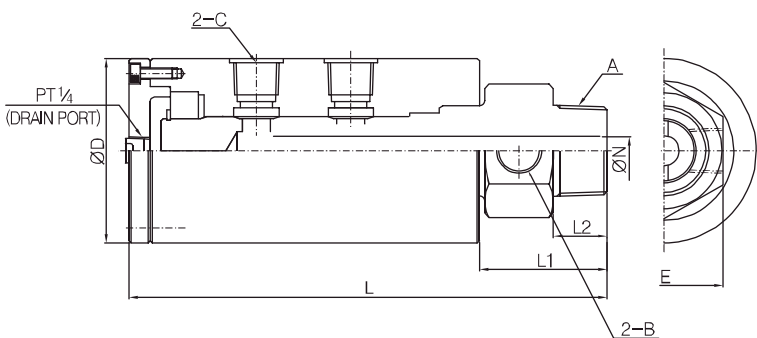


■ Operating Condition

- Max. Air Pressure : 10kg/cm<sup>2</sup> (150PSI)
- Max. Hydraulic Pressure : 210kg/cm<sup>2</sup> (3000PSI)
- Max. Rotation Speed : 250RPM
- Max. Temperature : 100°C (210°F)
- Media : Air, Hydraulic Oil
- \* Avoid max. pressure at max. rpm operation

■ Features

- Advanced model to FTKR6101, FTKR6106
- Leaking Oil can be retrieved to Oil tank through Drain port & pipe
- Clean operation can be made.



[unit : mm]

Nominal Size	A	B (PT)	C (PT)	D	E	L	L1	L2	N
FTKR6701-32A	PT1"-1/4"	1/2"	1/2"	86	55	223	59.5	25	14
FTKR6706-32A	NPT1"-1/4"	1/2"	1/2"	86	55	223	59.5	25	14



# 6000 Series Rotary Joints

## ▼ FTOR6200 (MULTI-PORT ROTARY JOINT FOR AIR/OIL HYDRAULIC MACHINE)



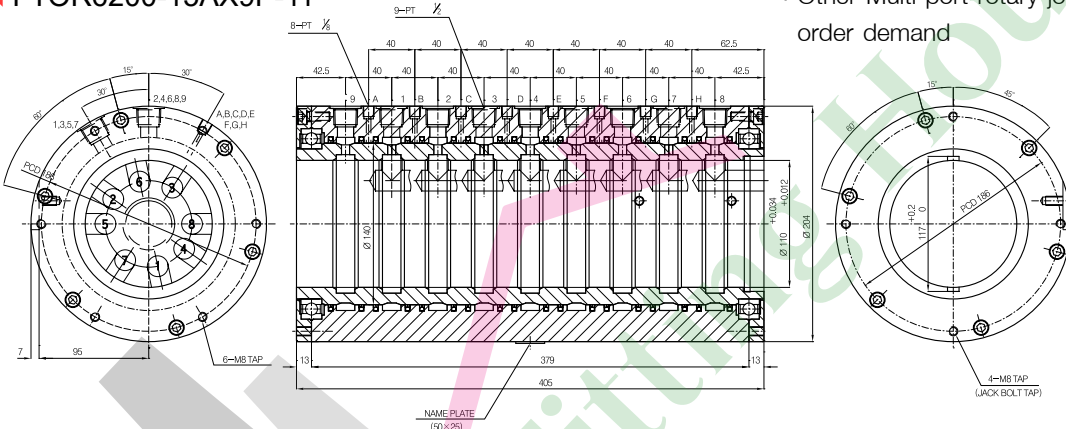
### ■ Operating Condition

- Max. Air Pressure : 10bar (150PSI)
- Max. Hydraulic Pressure : 140kg/cm<sup>2</sup> (2000PSI)
- Max. Rotation Speed : 250/min (250RPM)
- Max. Temperature : 100°C (210°F)
- Media : Air, Hydraulic Oil
- \* Avoid max. pressure at max. rpm operation

### ■ Features

- Multi-level Index table mounted Air/Oil hydraulic machine
- Special Seal for long and stable service life
- Other Multi-port rotary joints are available on order demand

## ▼ FTOR6200-15AX9P-11

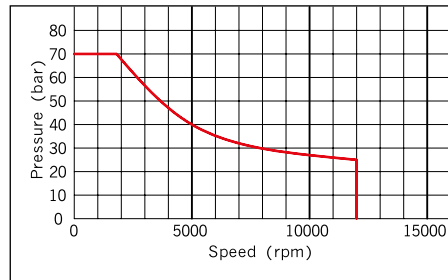


## ▼ FTKR6314-12, FTKR6313-12

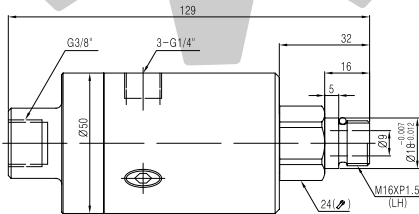


### ■ Operating Condition

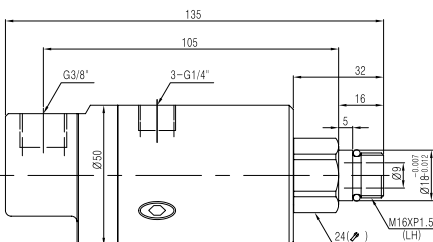
- Max. Coolant Pressure : 70bar (1,000PSI)
- Max. Rotation Speed : 12,000/min (12,000RPM)
- Max. Temperature : 80°C (180°F)
- Media : Coolant, Hydraulic Oil
- Refer to graph for maximum pressure and speed combination
- \* Avoid max. pressure at max. rpm operation



## ▼ FTKR6314-12-A FTKR6313-12-A



## ▼ FTKR6314-12-R FTKR6313-12-R



### ■ Features

- For high speed machining centers at an economical price
- Dry Running at high speed without coolant pressure
- Other port size and connection unions are available on order demand

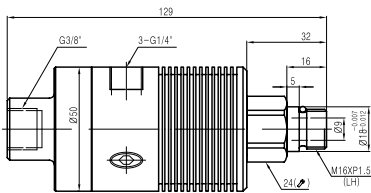


# 6000 Series Rotary Joints

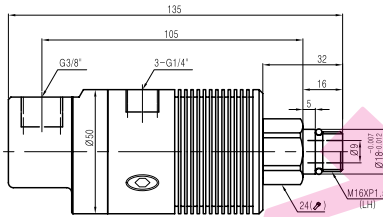
▼ FTKR6314-20, FTKR6313-20



▼ FTKR6314-20-A  
FTKR6313-20-A



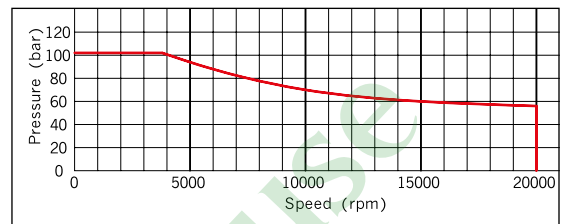
▼ FTKR6314-20-R  
FTKR6313-20-R



## ■ Operating Condition

Max. Coolant Pressure : 105bar (1,520PSI)  
 Max. Rotation Speed : 20,000/min (20,000RPM)  
 Max. Temperature : 80°C (180°F)  
 Media : Coolant, Hydraulic Oil  
 Refer to graph for maximum pressure and speed combination

\* Avoid max. pressure at max. rpm operation



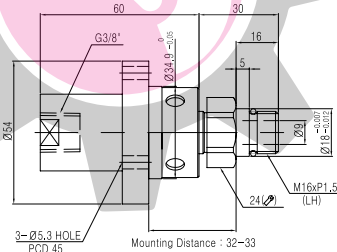
## ■ Features

- For high speed machining centers
- Dry Running at high speed without coolant pressure
- Other port size and connection unions are available on order demand

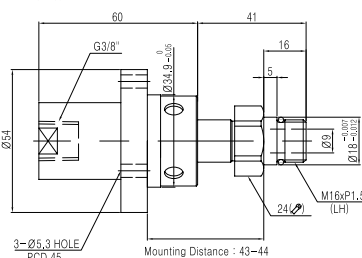
▼ FTKR6364-30, FTKR6363-30



▼ FTKR6364-30-1  
FTKR6363-30-1



▼ FTKR6364-30-2  
FTKR6363-30-2



## ■ Operating Condition

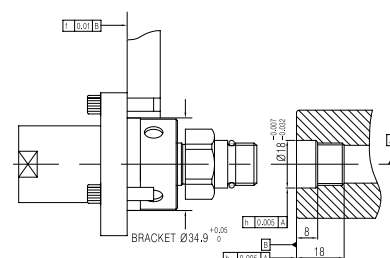
Max. Coolant Pressure : 105bar (1,520PSI)  
 Max. Rotation Speed : 30,000/min (30,000RPM)  
 Max. Temperature : 80°C (180°F)  
 Media : Air, Coolant, Hydraulic Oil

\* Avoid max. pressure at max. rpm operation

## ■ Features

- For high speed machining Centers
- Bearingless configuration and separate type
- Dry Running at high speed without coolant pressure
- Other port size and connection unions are available on order demand

## ■ Preparation of Spindle End and Mounting Bracket

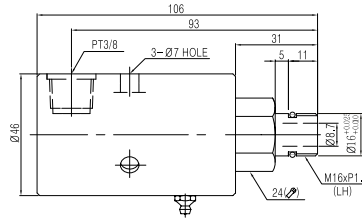


# 6000 Series Rotary Joints

▼ FTKR6414-10, FTKR6413-10



▼ FTKR6414-10-R  
FTKR6413-10-R



■ Operating Condition

- Max. Coolant Pressure : 70bar (1,000PSI)
- Max. Rotation Speed : 10,000RPM
- Max. Temperature : 100°C (210°F)
- Media : Coolant, Hydraulic Oil
- \* Avoid max. pressure at max. rpm operation

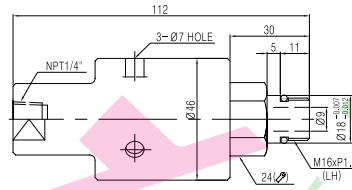
■ Features

- For high speed Spindle & gundrill
- Special mechanical seal protection against abrasive fluid

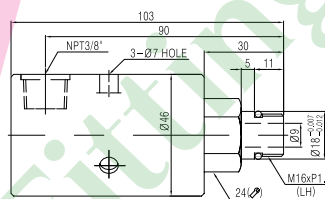
▼ FTKR6414-12, FTKR6413-12



▼ FTKR6414-12-A, FTKR6413-12-A

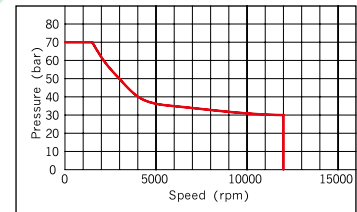


▼ FTKR6414-12-R, FTKR6413-12-R



■ Operating Condition

- Max. Coolant Pressure : 70bar (1,000PSI)
- Max. Rotation Speed : 12,000/min (12,000RPM)
- Max. Temperature : 80°C (180°F)
- Media : Coolant, Hydraulic Oil
- \* Avoid max. pressure at max. rpm operation



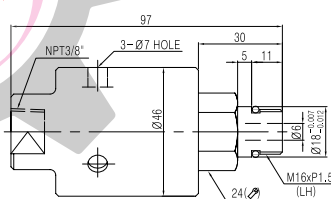
■ Features

- For high speed Spindle & gundrill
- Special mechanical seal protection against abrasive fluid

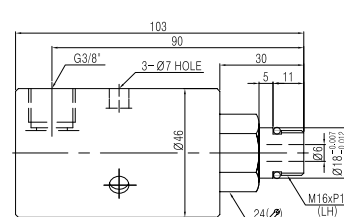
▼ FTKR6414-15, FTKR6413-15



▼ FTKR6414-15-A, FTKR6413-15-A

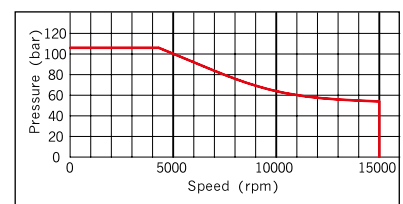


▼ FTKR6414-15-R, FTKR6413-15-R



■ Operating Condition

- Max. Coolant Pressure : 105bar (1,520PSI)
- Max. Rotation Speed : 15,000/min (15,000RPM)
- Max. Temperature : 80°C (180°F)
- Media : Coolant, Hydraulic Oil
- Refer to graph for maximum pressure and speed combination
- \* Avoid max. pressure at max. rpm operation



■ Features

- For high speed spindle & gundrill
- Other port size and connection unions are available on order demand



# 6000 Series Rotary Joints

## ▼ FTKR6505-15A\*3P



### ■ Operating Condition

Max. Air Pressure : 10kg/cm<sup>2</sup> (150PSI)

Max. Rotation Speed : 1,000RPM

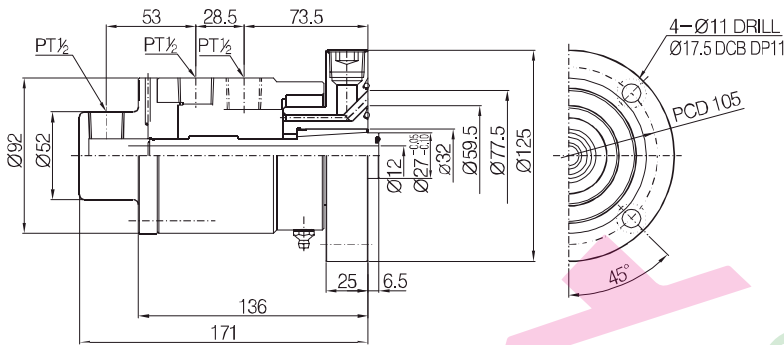
Max. Temperature : 100°C (210°F)

Media : Air

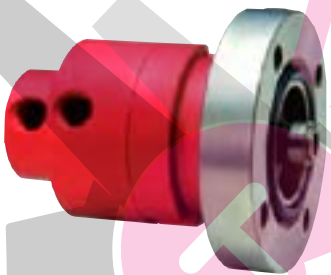
\* Avoid max. pressure at max. rpm operation

### ■ Features

- For Tire Mold & Press Clutch
- Low Friction at High speed rotation by Mechanical Seal structure



## ▼ FTKR6505-10A\*2P, FTKR6505-15A\*2P, FTKR6505-20A\*2P, FTKR6505-25A\*2P



### ■ Operating Condition

Max. Air Pressure : 10kg/cm<sup>2</sup> (150PSI)

Max. Rotation Speed : 1,000RPM

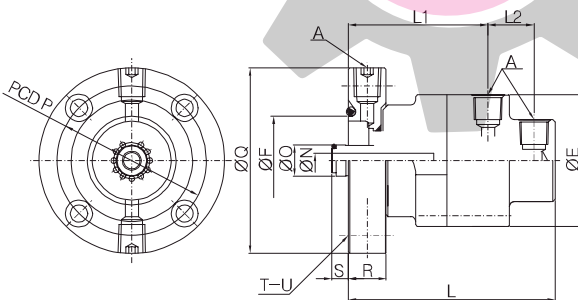
Max. Temperature : 100°C (210°F)

Media : Air

\* Avoid max. pressure at max. rpm operation

### ■ Features

- For Tire Mold & Press Clutch
- Low Friction at High speed rotation
- by Mechanical Seal structure



[unit : mm]

MODEL NO.	A (PT)	E	F	L	L1	L2	N	O	P	Q	R	S	T	U (Ø)
FTKR6505-10A*2P	3/8"	80	54	126	85	28	9	19	91	113	23	10	4	10.5
FTKR6505-15A*2P	1/2"	96	65	161	106.5	37.5	13	19	91	110	30	6.5	4	10.5
FTKR6505-20A*2P	3/4"	118	69.8	196	103	73	20	28.5	106	130	31	9.5	4	14
FTKR6505-25A*2P	1"	142	114.5	232	117	90.5	28	38	154	188	48.5	12.5	4	18

# 6000 Series Rotary Joints

▼ FTKR6605-10A, FTKR6605-15A

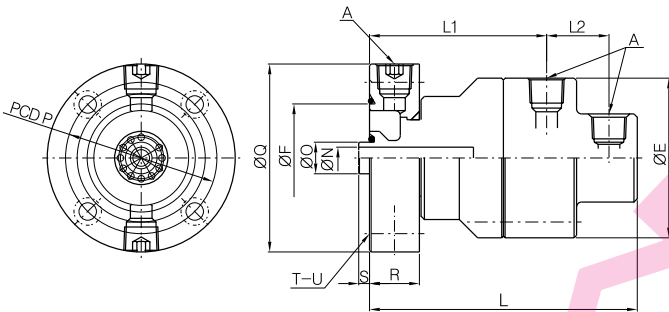


### Operating Condition

- Max. Air Pressure : 10kg/cm<sup>2</sup> (150PSI)
- Max. Hydraulic Pressure : 70kg/cm<sup>2</sup> (1000PSI)
- Max. Rotation Speed : 300RPM
- Max. Temperature : 100°C (210°F)
- Media : Air, Hydraulic Oil
- \* Avoid max. pressure at max. rpm operation

### Features

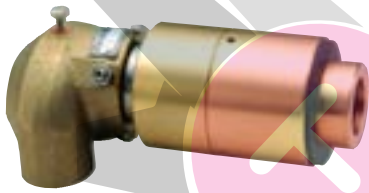
- For Dual action Hydraulic Oil Cylinder
- Duoflow
- Low Friction at High speed rotation by Mechanical seal structure



[unit : mm]

MODEL NO.	A (PT)	E	F	L	L1	L2	N	O	P	Q	R	S	T	U (ø)
FTKR6605-10A	3/8"	80	54	126	85	28	10	19	91	113	23	10	4	10.5
FTKR6605-15A	1/2"	96	65	161	106.5	37.5	13	19	91	113	30	6.5	4	10.5

# 7200 Series Rotary Joints



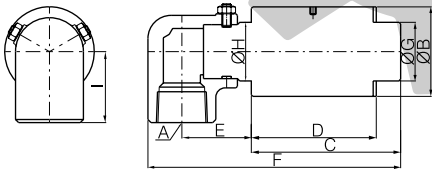
### Operating Condition

- Max. Water Pressure : 15kg/cm<sup>2</sup> (210PSI)
- Max. Rotation Speed : 100RPM
- Max. Temperature : 100°C (210°F)
- Media : Water
- \* Avoid max. pressure at max. rpm operation

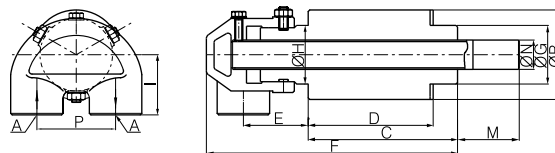
### Features

- Designed to be mounted inside of the cylinders on the continuous casting line.
- Body Insert Type & Full Insert Type available

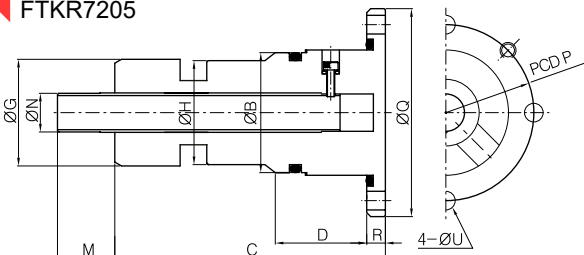
▼ FTKR7211



▼ FTKR7201



▼ FTKR7205



[unit : mm]

MODEL NO.	A (PT)	B	C	D	E	F	G	H	I	M	N	P	Q	R	U
FTKR7211-20A	3/4"RH	46	67	57	54.5	140.5	27	28	34	-	-	-	-	-	-
FTKR7201-20A	3/4"RH	58	96.8	81	42	162.8	38	38	39	40	19	51	-	-	-
FTKR7211-25A	1"RH	58	96.8	81	45	162.8	38	38	46	-	28	-	-	-	-
FTKR7201-25A	1"RH	70	100	85	66	197	49	50	46	38	14.5	64	-	-	-
FTKR7205-15A	Flange	45	101.5	33	-	-	40	39	-	21.5	-	66	78	7	7

