

# 600 Series Swivel Joints



### Operating Condition

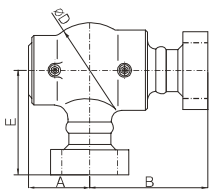
Size Range : 50A~150A (2"~6")  
 Max. Pressure : 210kg/cm<sup>2</sup> (3000PSI)  
 Max. Temperature :  
 100°C (210°F) NBR Packing  
 180°C (360°F) Viton Packing  
 Media : Air, Oil, Water, Hydraulic Oil

### Features

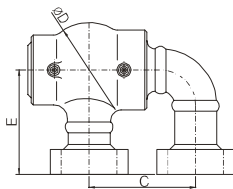
- Pressure Balance Type
- Low Torque at High pressure
- Extended service life

### FTKJ600

[unit : mm]



Type C



Type D

Nominal Size	A	B	C	D	E
50A	2"	88	200	153	136
65A	2-1/2"	103	220	184	166
80A	3"	109	240	207	173
100A	4"	141	270	274	206
125A	5"	155	310	324	295
150A	6"	195	450	400	370

# 610 Series Swivel Joints



### Operating Condition

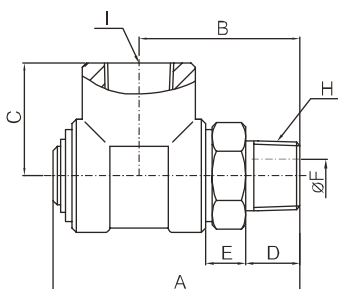
Size Range : 8A~50A (1/4"~2")  
 Max. Pressure : 210kg/cm<sup>2</sup> (3000PSI)  
 Max. Temperature :  
 100°C (210°F) NBR Packing  
 180°C (360°F) Viton Packing  
 Media : Air, Oil, Water, Hydraulic Oil

### Features

- Pressure Balance Type
- Low Torque at High pressure
- Extended service life

### FTKJ610

[unit : mm]



Type C

Nominal Size	A	B	C	D	E	F	G	H (PT)	I (PT)
8A	1/4"	54.5	36	23	12	9.5	6	19	1/4
10A	3/8"	59	38.5	27	13	9.5	8	22	3/8
15A	1/2"	74.5	49.5	29	17	13	12	27	1/2
20A	3/4"	91	60	34	20	14.5	16	30	3/4
25A	1"	106	71	38.5	23	19	20	41	1
32A	1-1/4"	121	79	44	25	20	28	50	1-1/4
40A	1-1/2"	132	86	54	25	23	34	60	1-1/2
50A	2"	161	104	60	30	26	42	70	2