

410 Series Swivel Joints



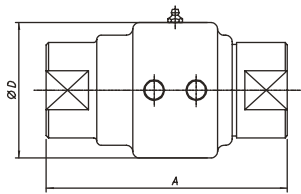
Operating Condition

Size Range : 10A~40A (3/8"~1.1/2")
 Max. Pressure : 400kg/cm² (5600PSI)
 Max. Temperature : 100°C (210°F)
 Media : Water

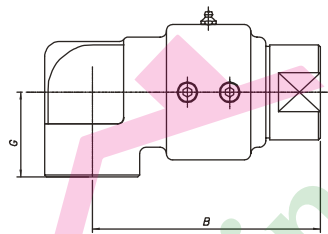
Features

- Electroless Nickle Plated body and Stainless steel shaft
- High pressure watering

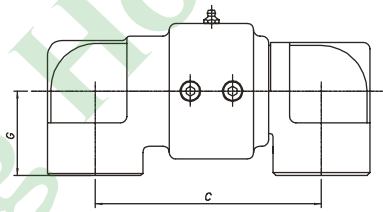
FTKJ410



Type A



Type C



Type D

[unit : mm]

Nominal Size		A	B	C	D	G
10A	3/8"	86	73	74	48	30
15A	1/2"	86	73	74	48	30
20A	3/4"	114	108	107	73	40
25A	1"	114	108	107	73	40
32A	1-1/4"	117	129	140	80	50
40A	1-1/2"	117	129	140	80	50