

3700 Series Rotary Joints



Operating Condition

- Size Range : 15A~80A (1/2"~3")
- Max. Pressure : 15kg/cm² (210PSI)
- Max. Rotation Speed :
 - 15A~25A (1/2"~1") : 300RPM
 - 32A~80A (1.1/4"~3") : 150RPM
- Max. Temperature : 220°C (420°F)
- Media : Steam, Hot Oil
- * Avoid max. pressure at max. rpm operation

Features

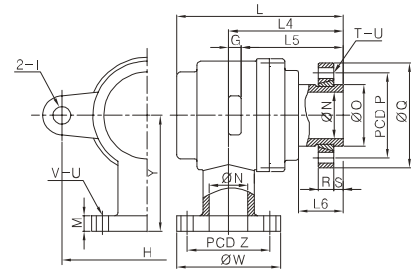
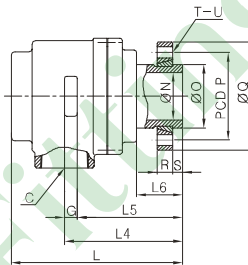
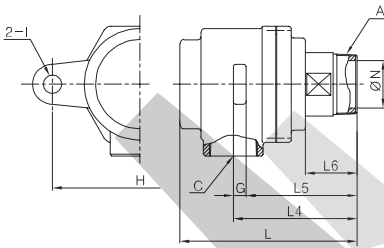
- Two Widely-Spaced Carbon Bearing
- Spherical Sealing
- Self-supported & Alignment rotating union
- Easily field repairable
- Non-Lubrication type
- High Temp. Steam & Hot Oil media

[SINGLE]

▼ FTKR3711 / FTKR3712

▼ FTKR3715

▼ FTKR3715-100A



[unit : mm]

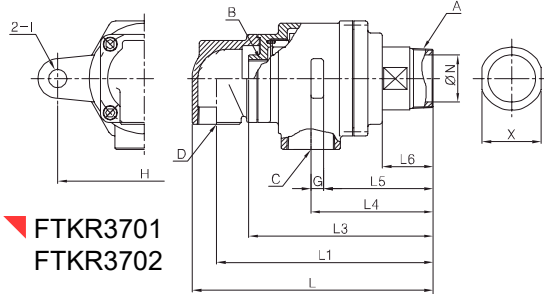
MODEL NO.		A	C	G	H	I	L	L4	L5	L6	N	X	Wt
PT [RH]	PT [LH]	(PT)	(PT)										(kg)
FTKR3711-15A	FTKR3712-15A	1/2"	1/2"	10	110	Ø15	141	96	86	44	14	21	2
FTKR3711-20A	FTKR3712-20A	3/4"	3/4"	10	130	Ø15	160	102	92	46	18	26	2.7
FTKR3711-25A	FTKR3712-25A	1"	1"	12	140	Ø15	170	109	97	48	23	32	3.2
FTKR3711-32A	FTKR3712-32A	1-1/4"	1-1/2"	12	180	Ø19	187	126	114	50	30	46	6.1
FTKR3711-40A	FTKR3712-40A	1-1/2"	1-1/2"	12	180	Ø19	187	126	114	50	34	46	5.7
FTKR3711-50A	FTKR3712-50A	2"	2"	14	200	Ø19	209	149	135	63	48	60	8.2
FTKR3711-65A	FTKR3712-65A	2-1/2"	2-1/2"	16	220	Ø23	216.5	152	135.5	64.5	60	75	11.5
FTKR3711-80A	FTKR3712-80A	3"	3"	16	240	Ø23	260.5	181	164.5	72.5	70	85	17.2

MODEL NO.	C	G	H	I	L	L4	L5	L6	N	O	P	Q	R	S	T	U	M	V	W	Y	Z	Wt
FLANGE	(PT)																					(kg)
FTKR3715-15A	1/2"	10	110	Ø15	141	96	86	44	14	25	45	62	11	8	4	Ø9	-	-	-	-	-	2.3
FTKR3715-20A	3/4"	10	130	Ø15	160	102	92	46	18	30	54	74	13	8	4	Ø11	-	-	-	-	-	3
FTKR3715-25A	1"	12	140	Ø15	170	109	97	48	23	35	60	80	14	9	4	Ø11	-	-	-	-	-	3.7
FTKR3715-40A	1-1/2"	12	180	Ø19	187	126	114	50	34	50	75	96	16	9	4	Ø11	-	-	-	-	-	6.4
FTKR3715-50A	2"	14	200	Ø19	200	140	126	54	48	65	95	120	19	10	4	Ø14	-	-	-	-	-	9.5
FTKR3715-65A	2-1/2"	16	220	Ø23	210	145	129	58	60	80	110	136	20	12	4	Ø14	-	-	-	-	-	13
FTKR3715-80A	3"	16	240	Ø23	250	170	154	62	70	90	125	154	20	12	6	Ø14	-	-	-	-	-	19.2
FTKR3715-100A	4"	25	300	Ø30	363	258	233	110	93	113	170	220	27	30	6	Ø19	24	8	210	217	175	52

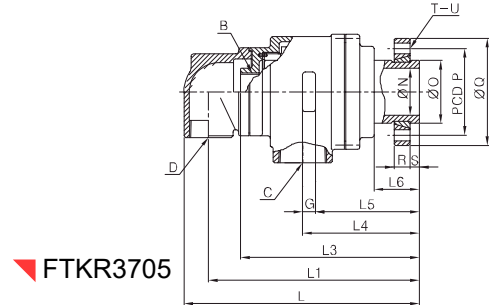


3700 Series Rotary Joints

[DUPLEX | STATIONARY SYPHON]

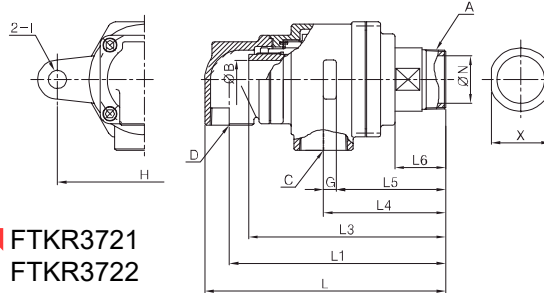


▼ FTKR3701
FTKR3702

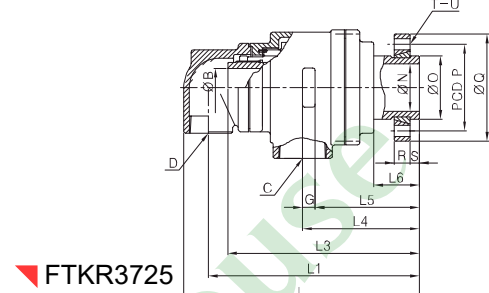


▼ FTKR3705

[DUPLEX | ROTARY SYPHON]



▼ FTKR3721
FTKR3722



▼ FTKR3725

[unit : mm]

MODEL NO.		A	B	C	D	G	H	I	L	L1	L3	L4	L5	L6	N	X	Wt				
PT [RH]	PT [LH]	(PT)	(PF,Ø)	(PT)	(PT)												(kg)				
FTKR3701-15A-6A	FTKR3702-15A-6A	1/2"	1/8"	1/2"	1/2"	10	110	Ø15	184	170	151	96	86	44	14	21	2.1				
FTKR3721-15A-Ø11	FTKR3722-15A-Ø11	1/2"	11	1/2"	1/2"	10	110	Ø15	184	170	163	96	86	44	14	21	2.1				
FTKR3701-20A-8A	FTKR3702-20A-8A	3/4"	1/4"	3/4"	3/4"	10	130	Ø15	195	178	156	102	92	46	18	26	2.8				
FTKR3721-20A-Ø14.5	FTKR3722-20A-Ø14.5	3/4"	14.5	3/4"	3/4"	10	130	Ø15	195	178	170	102	92	46	18	26	2.8				
FTKR3701-25A-10A	FTKR3702-25A-10A	1"	3/8"	1"	3/4"	12	140	Ø15	208	191	169	109	97	48	23	32	3.5				
FTKR3721-25A-Ø18	FTKR3722-25A-Ø18	1"	18	1"	3/4"	12	140	Ø15	208	191	183	109	97	48	23	32	3.5				
FTKR3701-32A-15A	FTKR3702-32A-15A	1-1/4"	1/2"	1"	3/4"	12	180	Ø19	248	230	200	126	114	50	30	46	6.9				
FTKR3721-32A-Ø22.5	FTKR3722-32A-Ø22.5	1-1/4"	22.5	1"	3/4"	12	180	Ø19	248	230	206	126	114	50	30	46	6.9				
FTKR3701-40A-20A	FTKR3702-40A-20A	1-1/2"	3/4"	1"	3/4"	12	180	Ø19	248	230	200	126	114	50	34	46	6.5				
FTKR3721-40A-Ø28	FTKR3722-40A-Ø28	1-1/2"	28	1"	3/4"	12	180	Ø19	248	230	206	126	114	50	34	46	6.5				
FTKR3701-50A-25A	FTKR3702-50A-25A	2"	1"	1-1/2"	1"	14	200	Ø19	281	259	225	149	135	63	48	60	9.8				
FTKR3721-50A-Ø34.5	FTKR3722-50A-Ø34.5	2"	34.5	1-1/2"	1"	14	200	Ø19	281	259	228	149	135	63	48	60	9.8				
FTKR3701-65A-40A	FTKR3702-65A-40A	2-1/2"	1-1/2"	2"	1-1/2"	16	230	Ø23	301.5	272	232	152	136	64.5	60	75	13.3				
FTKR3721-65A-Ø49	FTKR3722-65A-Ø49	2-1/2"	49	2"	1-1/2"	16	230	Ø23	301.5	272	250	152	136	64.5	60	75	13.3				
FTKR3701-80A-50A	FTKR3702-80A-50A	3"	2"	2-1/2"	2"	16	240	Ø23	361.5	326	276	181	165	72.5	70	85	19.9				
FTKR3721-80A-Ø61	FTKR3722-80A-Ø61	3"	61	2-1/2"	2"	16	240	Ø23	361.5	326	282	181	165	72.5	70	85	20.0				
MODEL NO.	B	C	D	G	H	I	L	L1	L3	L4	L5	L6	N	O	P	Q	R	S	T	U	Wt
FLANGE	(PF,Ø)	(PT)	(PT)																		(kg)
FTKR3705-15A-6A	1/8"	1/2"	1/2"	10	110	Ø15	184	170	151	96	86	44	14	25	45	62	11	8	4	Ø9	2.3
FTKR3725-15A-Ø11	11	1/2"	1/2"	10	110	Ø15	184	170	163	96	86	44	14	25	45	62	11	8	4	Ø9	2.3
FTKR3705-20A-8A	1/4"	3/4"	3/4"	10	130	Ø15	195	178	156	102	92	46	18	30	54	74	13	8	4	Ø11	3.2
FTKR3725-20A-Ø14.5	14.5	3/4"	3/4"	10	130	Ø15	195	178	170	102	92	46	18	30	54	74	13	8	4	Ø11	3.2
FTKR3705-25A-10A	3/8"	1"	3/4"	12	140	Ø15	208	191	169	109	97	48	23	35	60	80	14	9	4	Ø11	3.9
FTKR3725-25A-Ø18	18	1"	3/4"	12	140	Ø15	208	191	183	109	97	48	23	35	60	80	14	9	4	Ø11	3.9
FTKR3705-40A-20A	3/4"	1"	3/4"	12	180	Ø19	248	230	200	126	114	50	34	50	75	96	16	9	4	Ø11	7.3
FTKR3725-40A-Ø28	28	1"	3/4"	12	180	Ø19	248	230	206	126	114	50	34	50	75	96	16	9	4	Ø11	7.1
FTKR3705-50A-25A	1"	1-1/2"	1"	14	200	Ø19	272	250	218	140	126	54	48	65	95	120	19	10	4	Ø14	10.9
FTKR3725-50A-Ø34.5	34.5	1-1/2"	1"	14	200	Ø19	272	250	219	140	126	54	48	65	95	120	19	10	4	Ø14	10.9
FTKR3705-65A-40A	1-1/2"	2"	1-1/2"	16	220	Ø23	295	265	225	145	129	58	60	80	110	136	20	12	4	Ø14	14.8
FTKR3725-65A-Ø49	49	2"	1-1/2"	16	220	Ø23	295	265	243	145	129	58	60	80	110	136	20	12	4	Ø14	14.8
FTKR3705-80A-50A	2"	2-1/2"	2"	16	240	Ø23	351	315	265	170	154	62	70	90	125	154	20	12	6	Ø14	21.9
FTKR3725-80A-Ø61	61	2-1/2"	2"	16	240	Ø23	351	315	271	170	154	62	70	90	125	154	20	12	6	Ø14	21.9